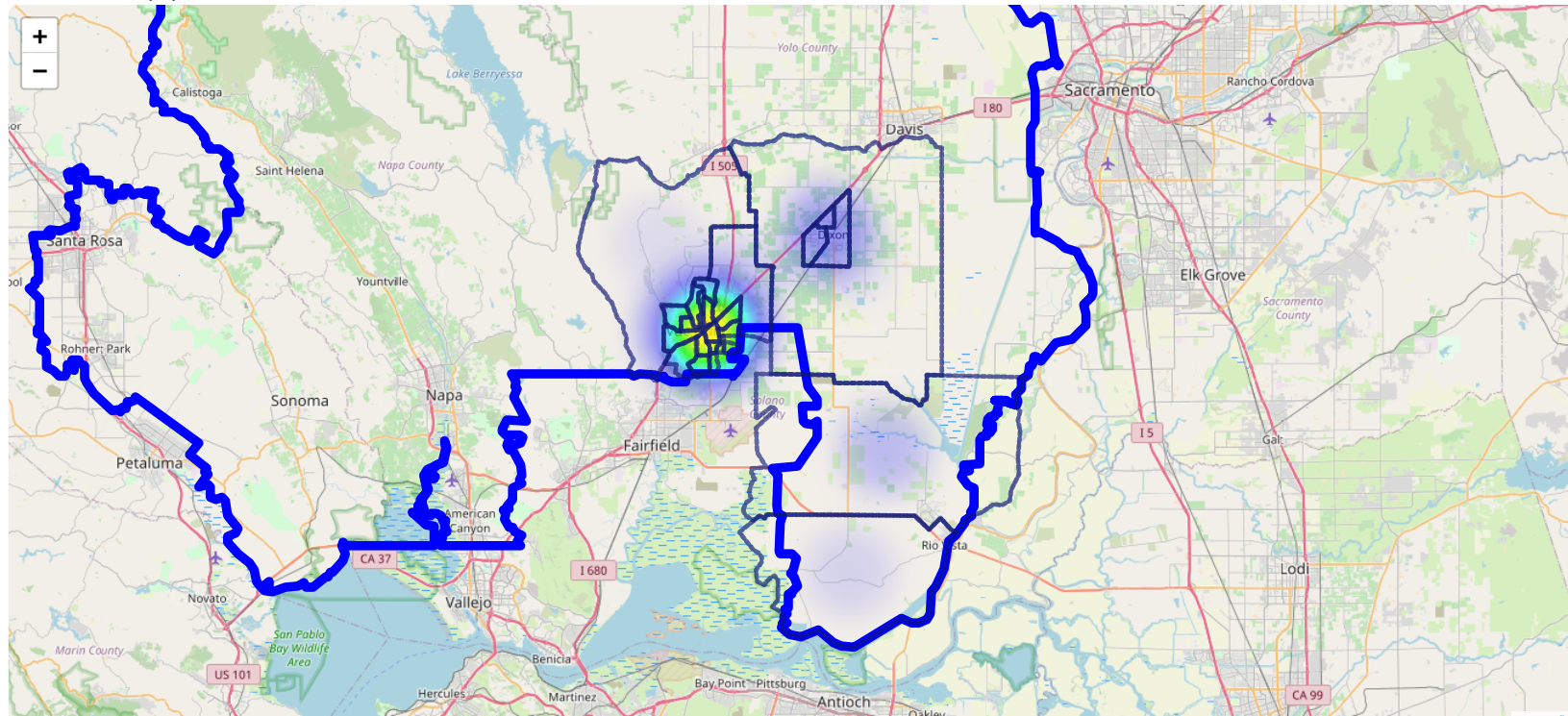


## Congressional District: congdist 04

Census tracts loaded: 25 features

### Census Centers (24)



### Demographics Summary (25 Census Tracts)

**126,164**

Total Population

**7.7%**

Below Poverty Level

**10.2%**

Food Insecure

**\$97,930.313**

Median Income

**5.4%**

Unemployment Rate

**62.4%**

Homeownership Rate

**20.8%**

Under 18 Years

**19.3%**

Over 65 Years

### Poverty Levels

**7.7%**

Below 100% Poverty

**10.6%**

Below 125% Poverty

**12.8%**

Below 150% Poverty

**17.2%**

Below 200% Poverty

### Racial/Ethnic Composition

**61.2%**

White

**29.2%**

Hispanic/Latino

**7.0%**

Black/African American

**8.3%**

Asian